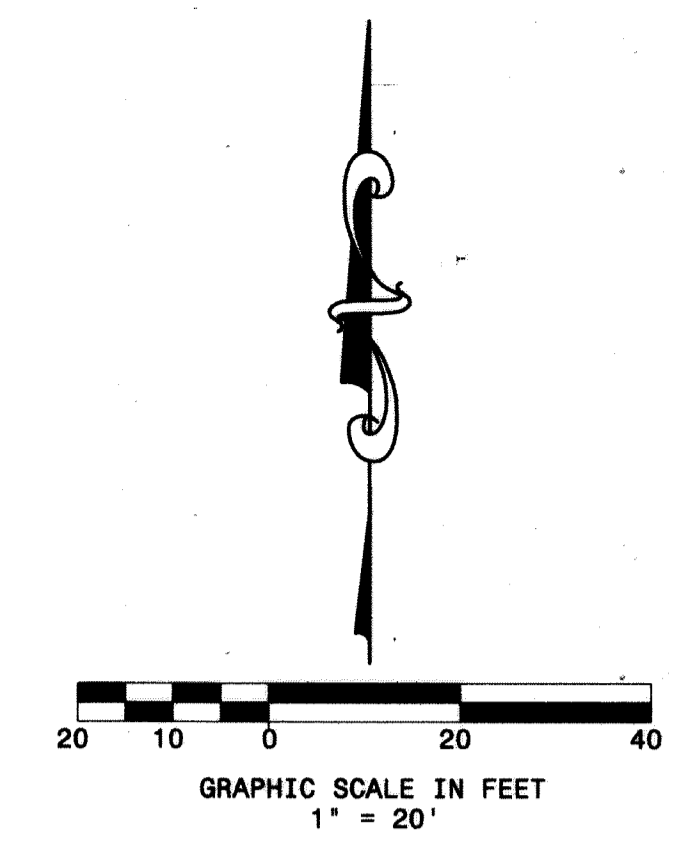


105



RESERVE AT TEQUESTA

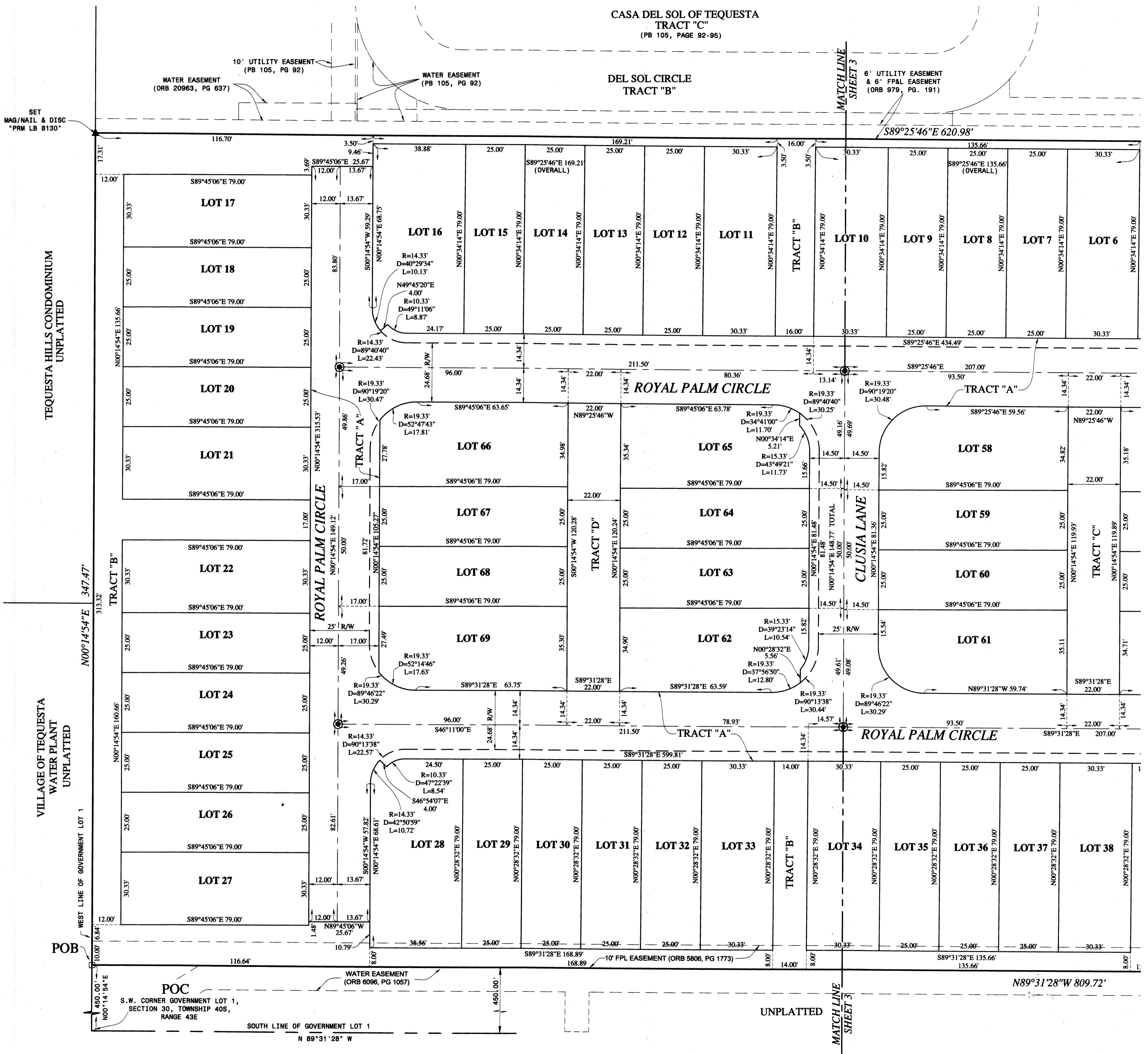
LYING IN GOVERNMENT LOT 1,
SECTION 30, TOWNSHIP 40 SOUTH,
RANGE 43 EAST,
VILLAGE OF TEQUESTA,
PALM BEACH COUNTY, FLORIDA
JUNE 2021
SITE DATA

AREA	LOT NUMBERS
1,975 S.F.	LOTS 2-4, 7-9, 12-15, 18-20, 23-26, 29-32, 35-37, 40-42, 45-47, 50-52, 55, 56, 59, 60, 63, 64, 67, 68
2,379 S.F.	LOT 1
2,396 S.F.	LOTS 5, 6, 10, 11, 17, 21, 22, 27, 33, 34, 38, 39, 43, 44, 48, 49, 53,
2,674 S.F.	LOT 54
2,682 S.F.	LOT 61
2,683 S.F.	LOT 57
2,687 S.F.	LOT 58
2,709 S.F.	LOT 62
2,712 S.F.	LOT 65
2,742 S.F.	LOT 69
2,745 S.F.	LOT 66
3,025 S.F.	LOT 16
3,030 S.F.	LOT 28
151,775 S.F.	TOTAL LOT AREA (69 LOTS)
AREA	TRACTS
51,050 S.F.	TRACT "A"
32,791 S.F.	TRACT "B"
2,637 S.F.	TRACT "C"
2,646 S.F.	TRACT "D"
21,755 S.F.	TRACT "E"
262,854 S.F. 6,030 ACRES	TOTAL

- LEGEND**
- SET MAG/NAIL & DISC "PCP LB 8130"
 - FOUND 4"x4" CONCRETE MONUMENT "PRM LS 2439"
 - SET 4"x4" CONCRETE MONUMENT "PRM LB 8130"
 - SET IRON ROD & ALUMINUM CAP P.R.M. "LS 6147"
 - ▲ SET MAG/NAIL & DISC "PRM LB 8130"
 - ⊙ CENTERLINE
 - P.C. POINT OF CURVATURE
 - P.R.C. POINT OF REVERSE CURVATURE
 - FPL FLORIDA POWER & LIGHT
 - ORB OFFICIAL RECORD BOOK
 - PG PAGE
 - PB PLAT BOOK
 - CHB CHORD BEARING
 - CHD CHORD DISTANCE
 - D INTERIOR ANGLE
 - R RADIUS
 - L ARC LENGTH
 - POC POINT OF COMMENCEMENT
 - POB POINT OF BEGINNING
 - ORB OFFICIAL RECORD BOOK
 - PRM PERMANENT REFERENCE MONUMENT
 - S.F. SQUARE FEET
 - R/W RIGHT OF WAY

SHEET 2 OF 3

Legacy
Surveying and Mapping, Inc.
112 N. U.S. Highway No. 1
Tequesta, FL 33469
Phone: (561) 746-8424
BUSINESS LICENSE: LB# 8130



SET
MAG/NAIL & DISC
"PRM LB 8130"

TEQUESTA HILLS CONDOMINIUM
UNPLATTED

VILLAGE OF TEQUESTA
WATER PLANT
UNPLATTED

WEST LINE OF GOVERNMENT LOT 1

POC
S.W. CORNER GOVERNMENT LOT 1,
SECTION 30, TOWNSHIP 40S,
RANGE 43E

WATER EASEMENT
(ORB 6096, PG 1057)

UNPLATTED

MATCH LINE
SHEET 3